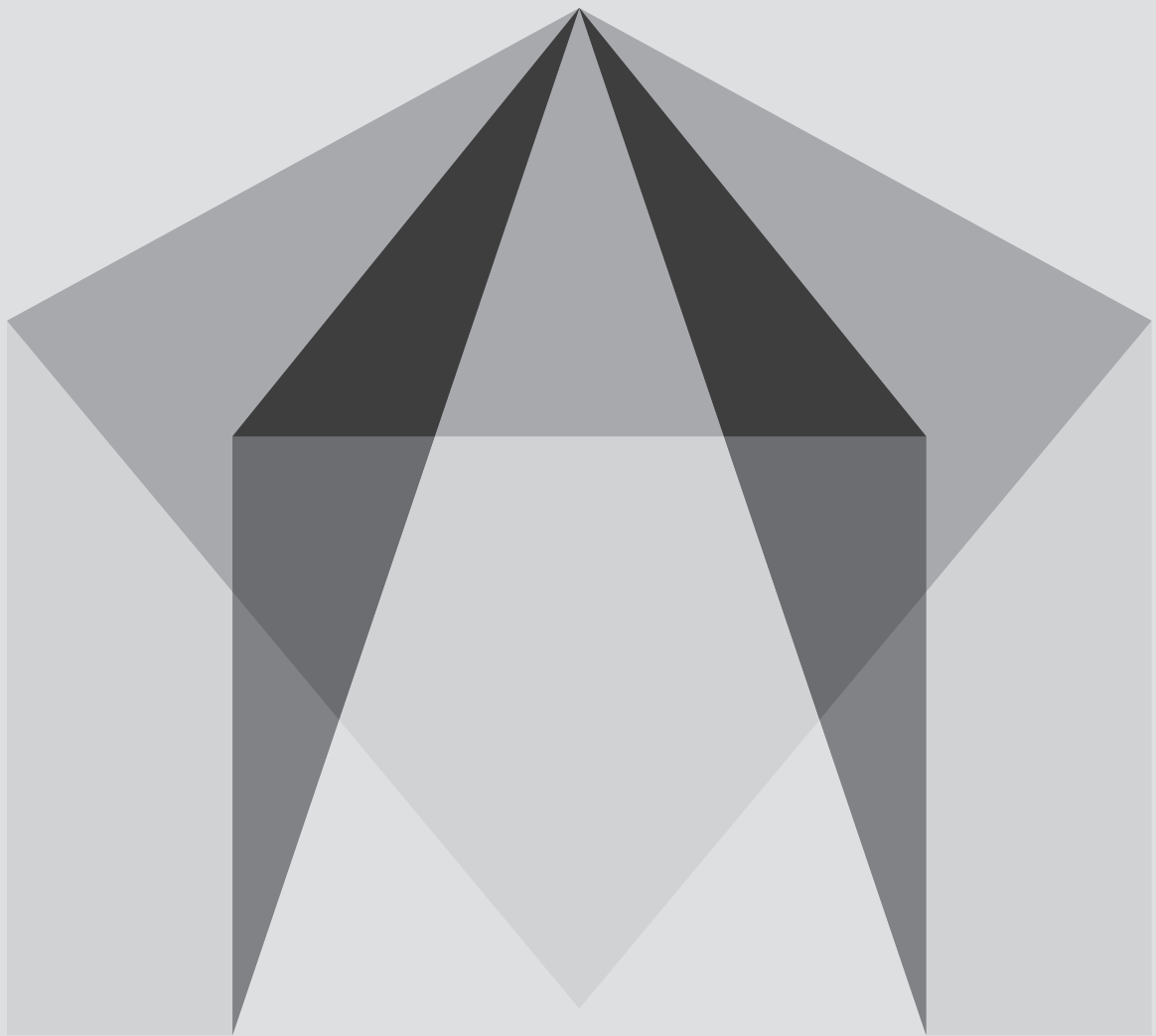


Maya 2014



Windows Software Installation



For use by: Students, employees and guests
Version: 1.0
Date: 26-08-2013
Owner: @Hok

(this page was intentionally left blank)

Installing Autodesk Maya 2014 on Windows

You can download Maya 2014 and the required license files from: <http://toi.bk.tudelft.nl/software>

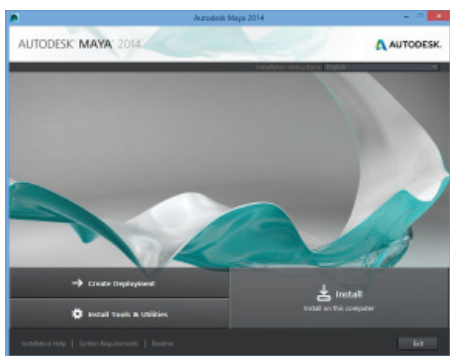
Download the 64-bit installation package if you're running a 64-bit version of Windows. Otherwise download the 32-bit or when you're unsure.

You can check if you have a 32 or 64-bit version in the properties page of My Computer

1. Double-click the Maya executable file that you downloaded. Click Next to unzip the extracted files to the default directory (C:\Autodesk\Maya2014). Or click Browse to navigate and select a different directory. This is a temporary location where the installer will place the files it need for installation.

2. In the License Agreement window, do the following: Select your Country or Region from the drop-down list. Select I ACCEPT to accept the terms and conditions. Click Next.

In the next welcome screen, choose Install. Wait until the installer has initialized.



3. In the Product Information window, select **Stand-Alone** as License Type.

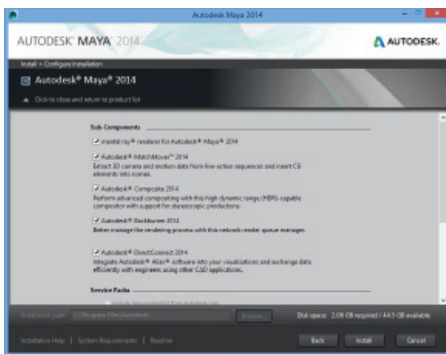
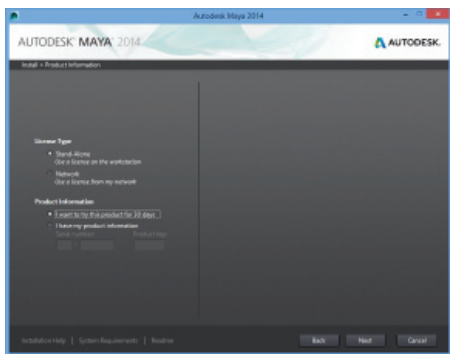
4. In the Configure Installation window, select the components you want to install.

Select **I want to try this product for 30 days**. Click Next to continue.

Select Mental Ray and DirectConnect 2014.

We'll sort out the TU Delft License later.

Optionally you can select MatchMover, Composite and Backburner



5. An Installion Progress window displays. This may take a while.

6. Verify that all components have been installed successfully. Click Finish.

Continue on the next page to install the TU Delft License.



Installing the TU Delft License file

The TU Delft license for Autodesk Maya uses a network license. The following steps install the required license files.

Note that **you need to be connected to the TU Delft network** in order to run Maya.

When you don't have a direct connection to the TU Delft network, you need to use **VPN**. Refer to <http://vpn.tudelft.nl>
When you're connected to the Eduroam or DASTUD wireless or wired network, you don't need to use VPN.

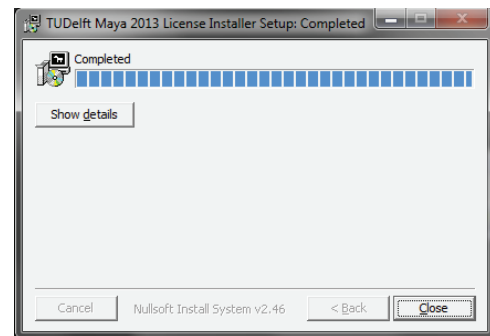
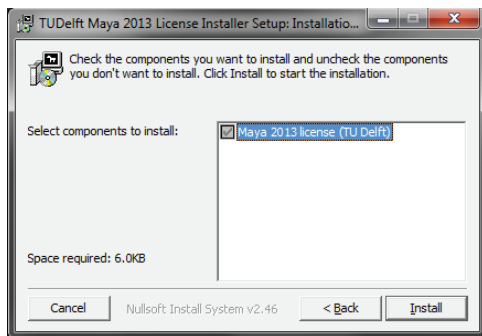
Automated license file installation

I. Download the "TUDelft Maya 2014 License installer for Windows" from the Maya for Students website and save it in a convenient location.

II. Click Install. After it finishes close the installer.

You should now be able to run Maya.

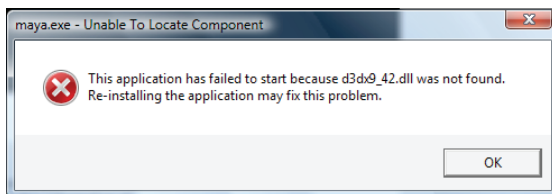
Double-click the downloaded file to start the installation.



If you encounter any problems starting Maya, please refer to: <http://toi.bk.tudelft.nl/extra/software/docs/faq.html>

Maya doesn't start: d3dx9_42.dll is missing (DirectX)

I. On some systems, Maya may initially fail to start, displaying:



II. This is caused by an out-of-date DirectX version on your system. DirectX is part of Windows.

Update the DirectX End-User Runtime using Microsofts Webinstaller:

<http://www.microsoft.com/download/en/details.aspx?id=35>

III. Download the Webinstaller and start it. This will update DirectX on you system.

When this completes, Maya should be able to start normally.