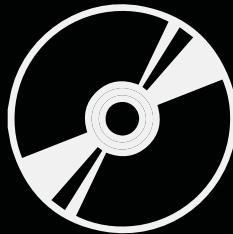


Maya 2015



Windows Software Installation



For use by: Students, Employees
Version: 1.0
Date: 14-07-2014
Owner: @Hok /SSC ICT

(this page was intentionally left blank)

Installing Autodesk Maya 2015 on Windows

You can download Maya 2015 and the required license files from: <http://toi.bk.tudelft.nl/software>

Before you begin

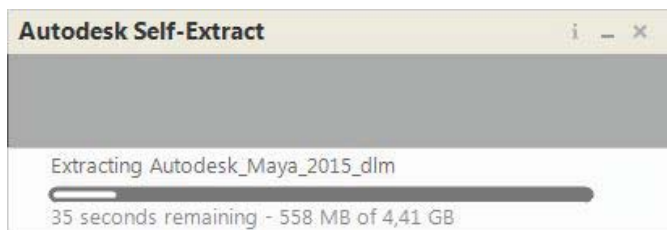
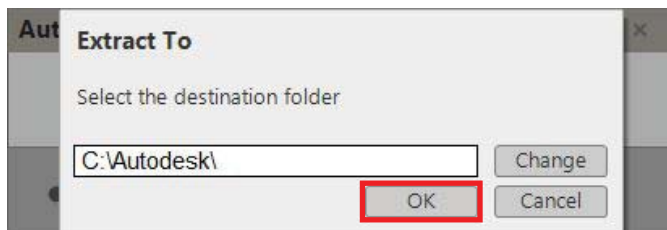
The following instruction is supported by the TU Delft and has been tested to be working. However, we offer this manual to you as an extra service. In case you have a configuration or version of Windows other than the one described here and you have problems installing Maya 2015, neither ICT nor a Servicepoint will be able to help you to install Maya.

Prerequisites

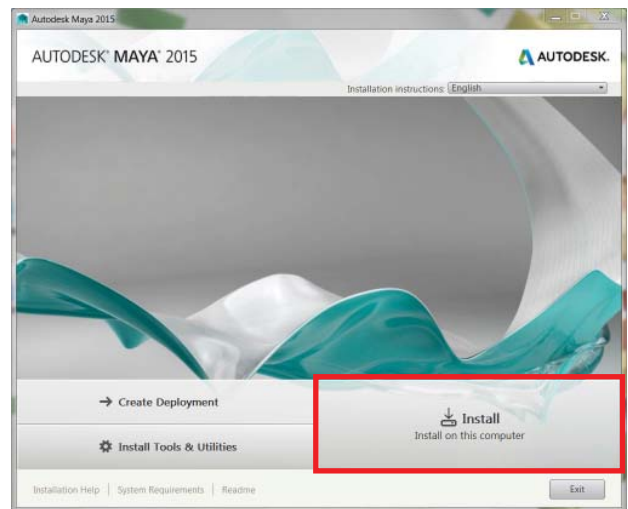
In order to install Maya 2015, make sure that you have a valid NetID.

Maya 2015 installation

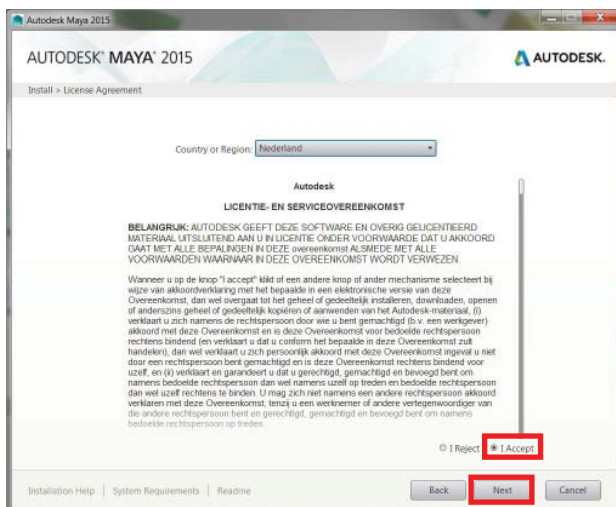
Step 1. Launch the Maya executable file that you downloaded. Click **OK** to extract the install files. By default the files will be sent to:
C:\Autodesk\Autodesk_Maya_2015_dlm.



Step 2. After the files are extracted the installer will launch automatically. When the installer has initialized choose **Install**.

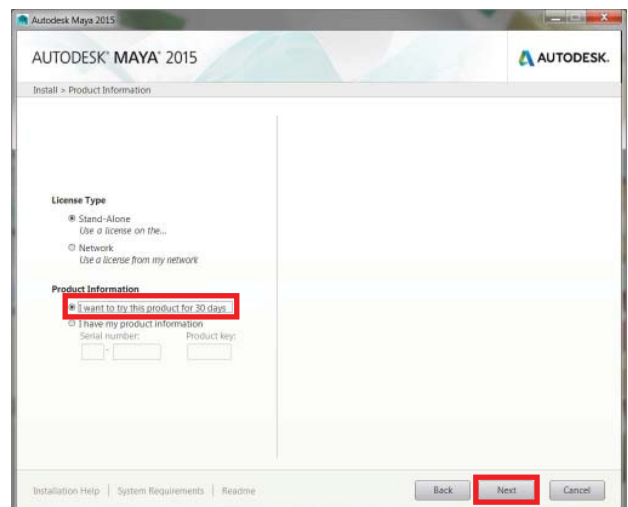


Step 3. In the License Agreement window select your Country or Region from the drop-down list. Then select **I Accept** and click **Next**.



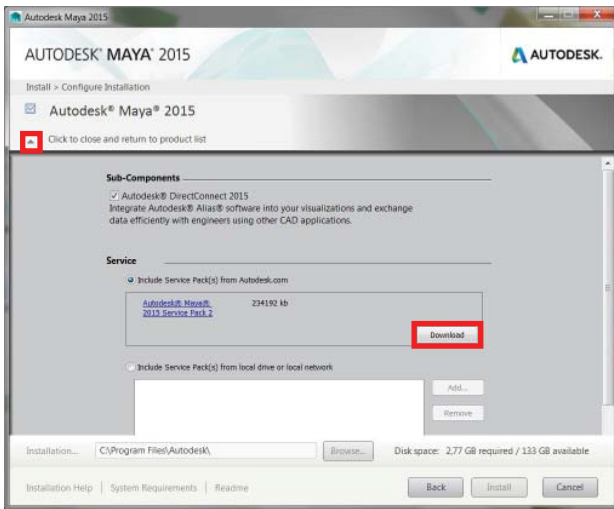
Step 4. In the Product Information window select **Stand-Alone** as License Type.

Select **I want to try this product for 30 days** and click **Next** to continue. The license will be sorted out later.

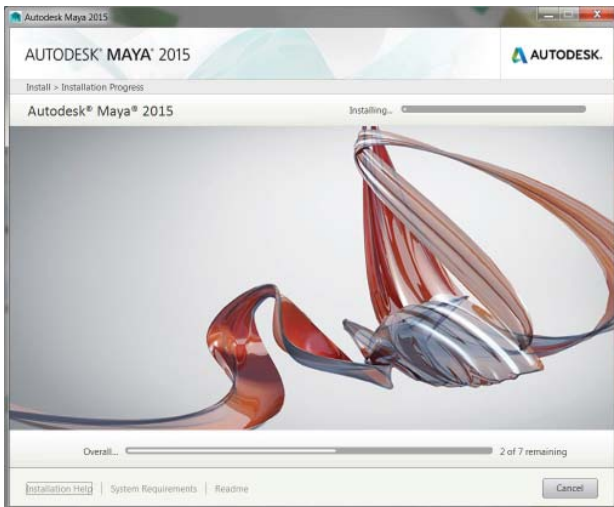


Step 5. In the Configure Installation window click the small arrow below Autodesk Maya 2015 to configure its components.

Make sure **Autodesk DirectConnect 2015** is selected. Click **Download** to get the latest update. When the download is complete click the small arrow again to return to the product list.

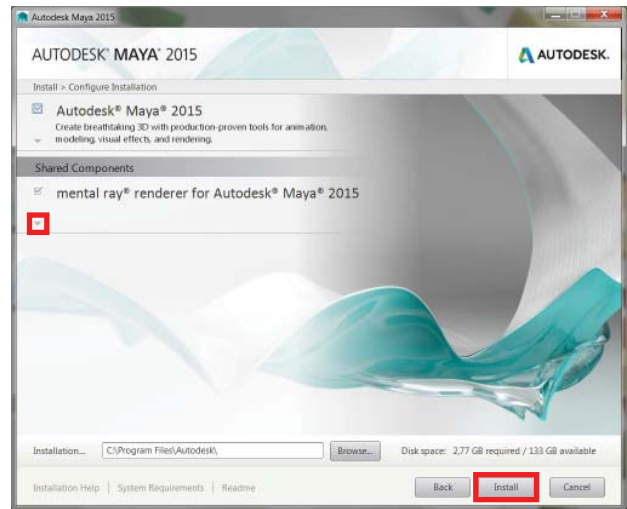


Step 7. The Installation Progress window appears. This may take a while.



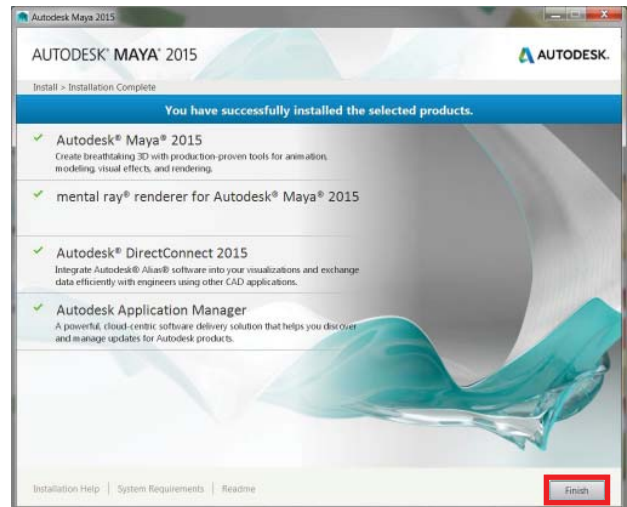
Step 6. Click the arrow below **mental ray renderer** to configure its components. **Download** the update and return to the product list again.

Click **Install**.



Step 8. Verify that all components have been installed successfully. Click **Finish**.

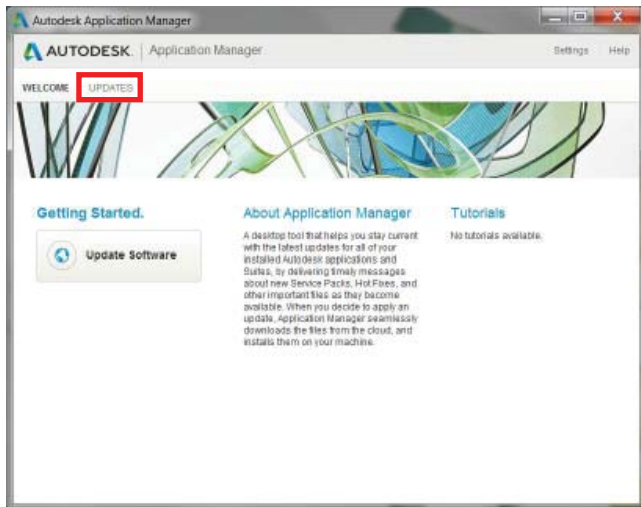
Continue on the next page to update Maya and install the TU Delft license.



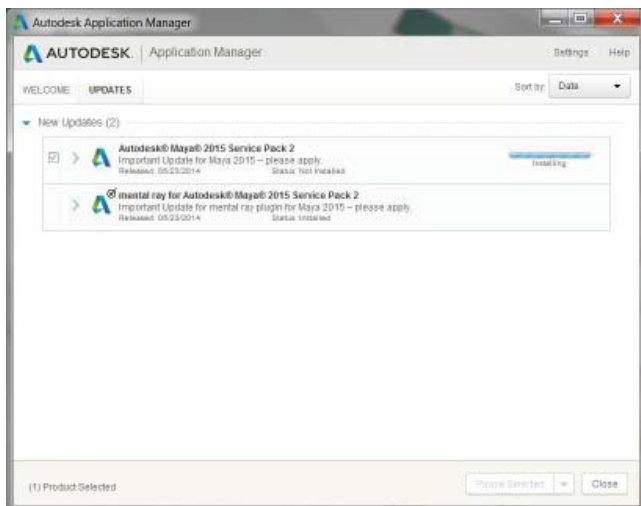
Updating Maya through the Autodesk Application Manager

Step 1. During installation of Maya you might get an update notification from Autodesk Application Manager. After you click on this notification go to **Updates** in the window that appears.

If you don't get the notification skip to the next section.

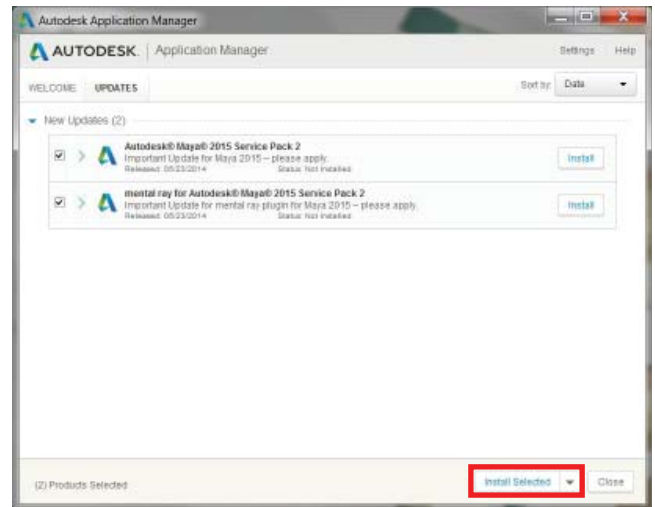


Step 3. The updates will be downloaded and installed automatically. If you minimize these windows the update process will continue in the background.



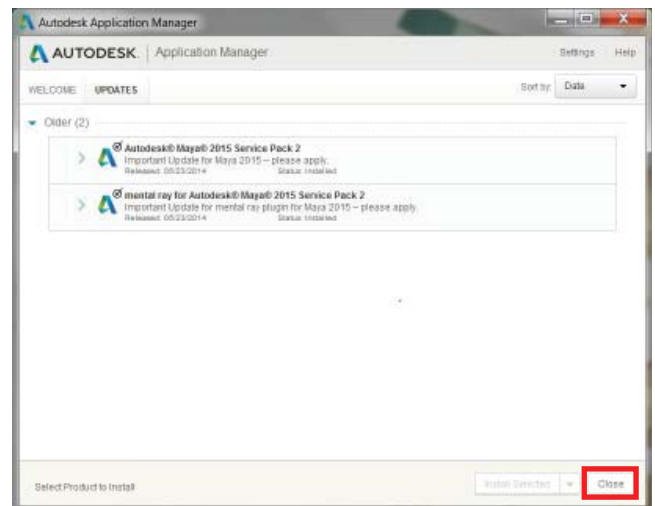
Step 2. Before you proceed to install the updates make sure that the regular installation is completed.

When ready, check all updates and click **Install Selected**.



Step 4. Verify that all components have been updated successfully. Click **Close**.

Continue to the next section to install the license.



Installing the TU Delft license file

You can download the license files required to run Maya from: <http://toi.bk.tudelft.nl/software>

Prerequisites

The TU Delft license for Autodesk Maya uses a network license. The following steps install the required license files.

Note that **you need to be connected to the TU Delft network** in order to run Maya.

When you don't have a direct connection to the TU Delft network, you need to use **VPN**. Refer to <http://vpn.tudelft.nl>. If you're connected to the Eduroam or DASTUD wireless or wired network, VPN is not needed.

Automated license file installation

Step 1. Download the "TUDelft Maya 2015 License installer for Windows" from the Maya for Students website and save it in a convenient location.

Step 2. Click **Install**. After it finished close the installer.

You should now be able to run Maya.

Double-click the downloaded file to start the installation.

