

Revit 2016



Windows
Software Installation



For use by:	Students, Employees
Version:	1.1
Date:	06-06-2017
Owner:	@Hok /SSC ICT

(this page was intentionally left blank)

Installing Autodesk Revit 2016 on Windows

The files for installing Autodesk software are available at: <http://students.autodesk.com>

Before you begin

The following instruction is supported by the TU Delft and has been tested to be working. However, we offer this manual to you as an extra service. In case you have a configuration or version of Windows other than the one described here and you have problems installing Revit 2016, neither ICT nor a Servicepoint will be able to help you to install Revit. The new download consists of **2 parts**. This is not downloadable in Chrome

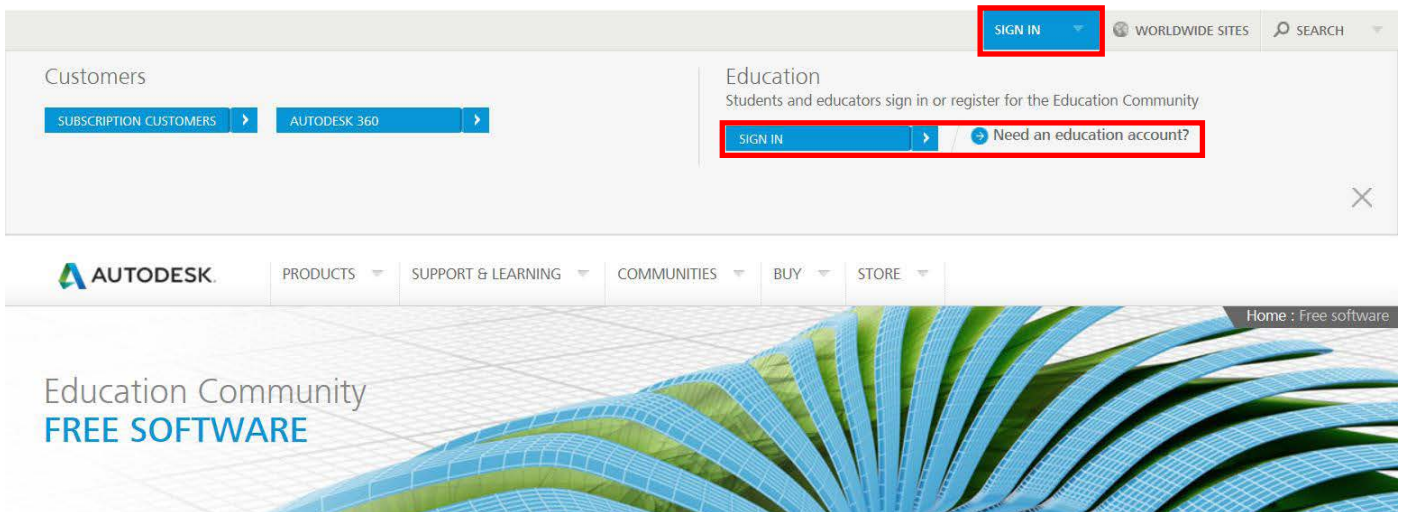
Prerequisites

During the installation Revit you need to choose the correct libraries to install. How to do this is explained in detail in the Revit 2016 installation section. It is very important to follow these steps carefully.

Downloading Revit via Autodesk Education Community

Step 1. Go to <http://students.autodesk.com>.

Step 2. To create a new account click **Sign in** and in the drop-down menu go to **Need an education account?**



Step 3. Use your **@student.tudelft.nl** e-mail address to register.

After registering you will receive an activation e-mail. Click the link herein to verify your e-mail address and complete the registration process.

Step 4. You will find a list of all available software when you scroll down on the webpage.

Find and click **Revit**.

CREATE ACCOUNT

Country: Select

Birthdate: Month | Day | Year

Education status Get help

I am a: Select

Account information

First name:

Last name:

Autodesk ID (Username): ⓘ

Email:

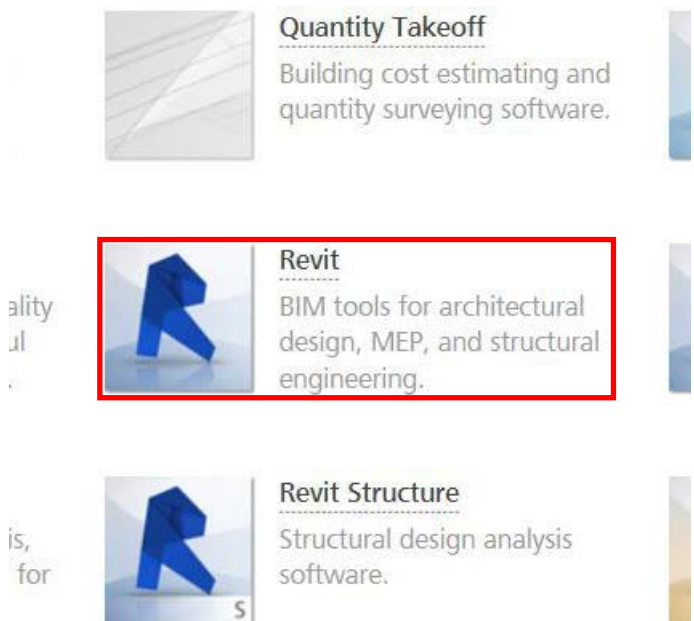
Confirm email:

Password:

Confirm password:

Terms & conditions

I would like to receive e-mail communications from Autodesk, including information about new products and special promotions.



Step 5. Choose the correct software from the drop-down lists as shown in the image below. You will receive a serial code (a copy of which will be sent to your e-mail).

Step 6. Click on the arrow to the right of Install Now and choose **Browser Download** from the drop-down menu.

Get a free 3-year license today

1.) Sign in or register.

✔ You have successfully signed in

[Sign out](#) | [My account](#)

2.) Select the free software you want.

Revit 2016 ▼ ✔

English ▼

Windows 64-bit ▼

3.) Review and download.

Autodesk Revit 2016 - WIN 64 - EN

Your serial number: ██████████

Product key: 829H1

✔ An email containing the license information above has been sent to you.

Important License Information

While the Autodesk Educational Version software incorporates all the functionality of our professional licenses, it may not be used for commercial or for-profit purposes, as more fully described in the License and Services Agreement. Term-based licenses of Autodesk Educational software are not eligible for product upgrade or migration to a commercial license. The licensed software obtained on this site may not be installed or used on institutional computers located in classrooms and laboratories (except for an institutional computer assigned to a faculty member by an educational institution for the faculty member's sole use), and may only be installed and used on the personal computer of the eligible Autodesk Education Community member.

INSTALL NOW

Install Now

Download Now

Browser Download

Help me decide

Need help?

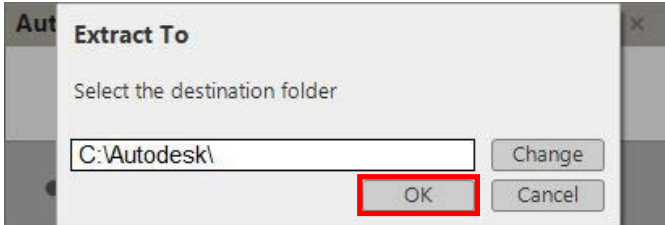


Caution!

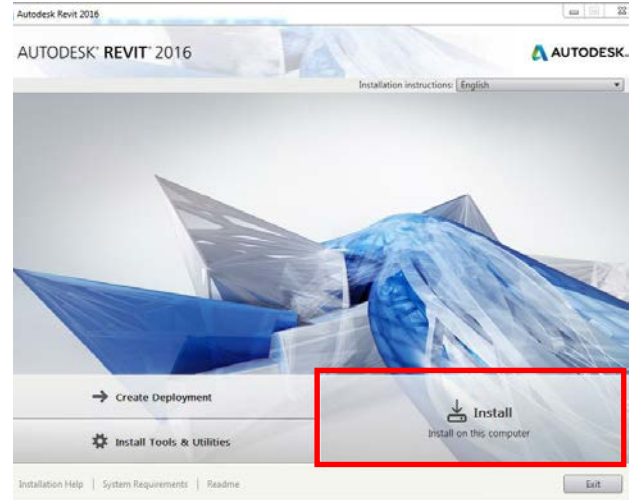
Depending on your regional setting some libraries may or may not be installed automatically. It is very important to install the correct libraries, otherwise some basic elements may not be available in the program.

To make sure that you have the correct libraries installed, we are going to configure it manually in the next steps!

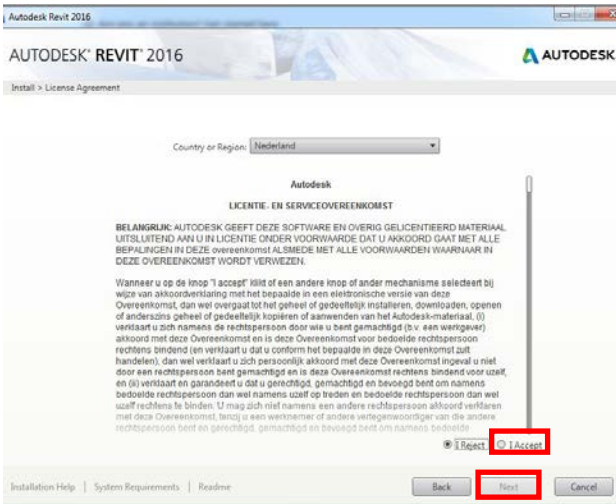
Step 1. Launch the Revit executable file that you downloaded. Click **OK** to extract the install files. By default the files will be sent to:
C:\Autodesk\Autodesk_Revit_2016_English_Win_64bit_dlm.



Step 2. After the files are extracted the installer will launch automatically. When the installer has initialized choose **Install**.

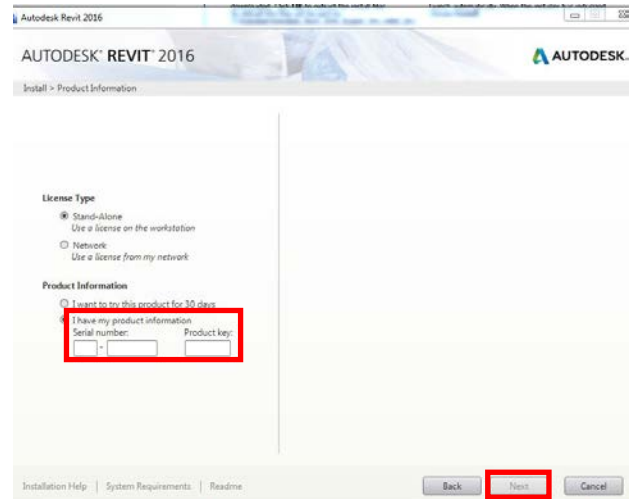


Step 3. In the License Agreement window select your Country or Region from the drop-down list. Then select **I Accept** and click **Next**.

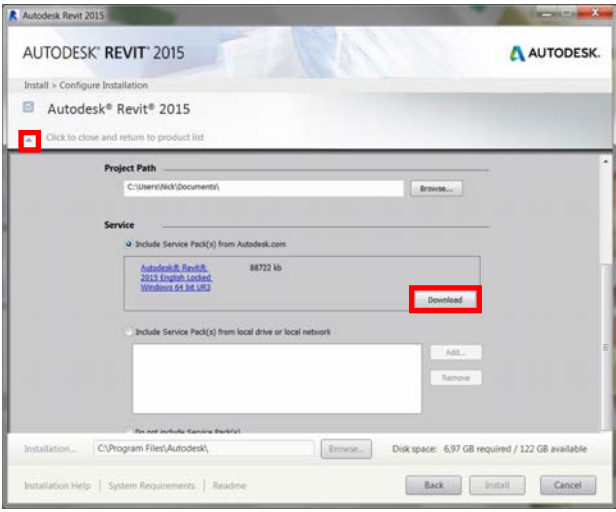


Step 4. In the Product Information window select **Stand-Alone** as License Type.

Under **I have my product information** enter your product key and serial number. Click **Next** to continue.

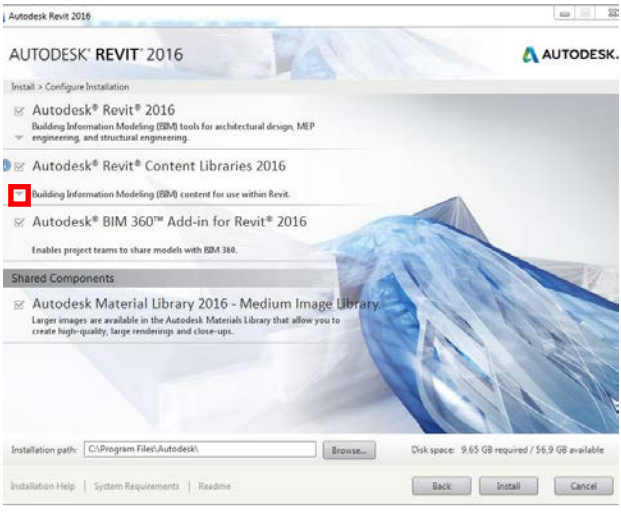


Step 5. In the Configure Installation window click the small arrow below Autodesk Revit 2016 to configure its components. This might not be available when there are no updates. If so skip to **Step 6**
 Scroll down and click **Download** (below Include Service Packs from Autodesk.com) to get the latest update.



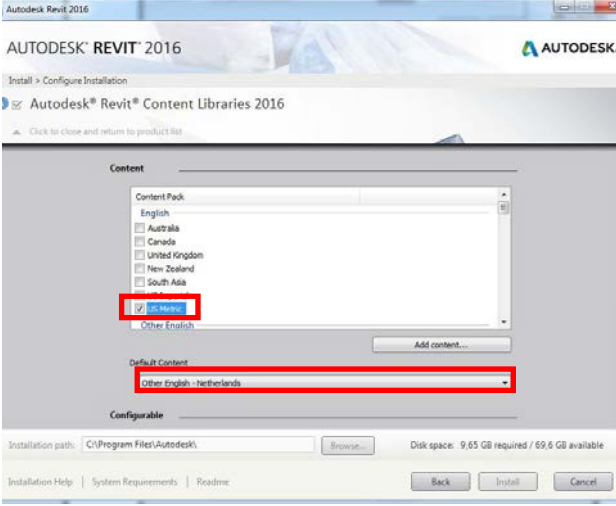
Step 6. When the download is complete click the small arrow again to close the drop-down menu and return to the product list.

Click the small arrow below Autodesk Revit Content Libraries 2016 to configure the libraries to install.



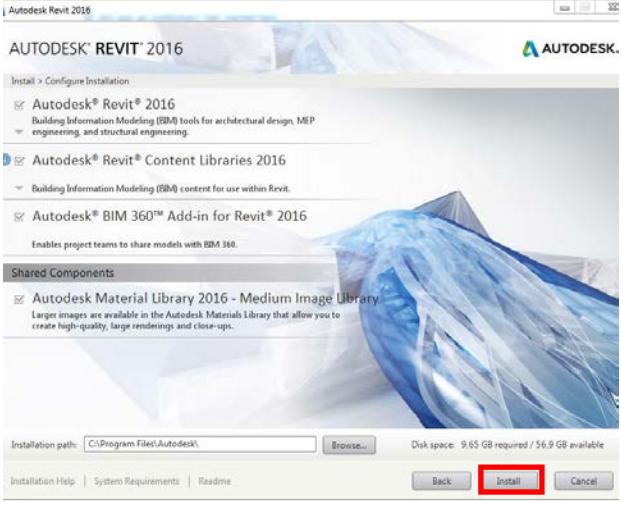
Step 7. Make sure the following content is selected: **US Metric, Netherlands** (deselect US Imperial)

Set **Other English - Netherlands** as Default Content.



Step 8. Click the small arrow to close the drop-down menu and return to the product list.

Click **Install**.

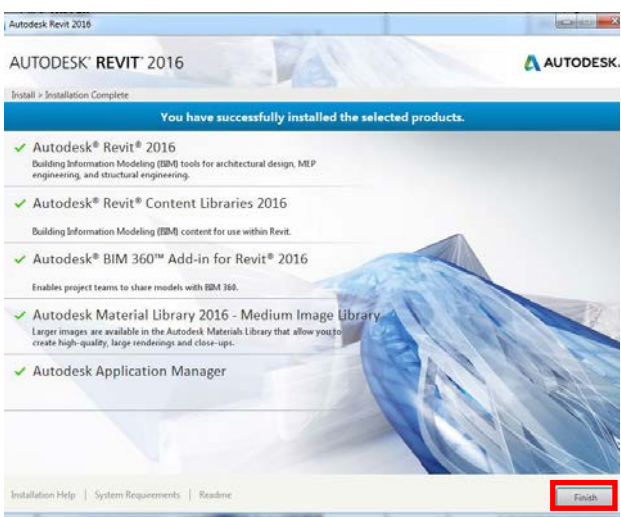


Step 9. The Installation Progress window appears. This may take a while.



Step 10. Verify that all components have been installed successfully. Click **Finish**.

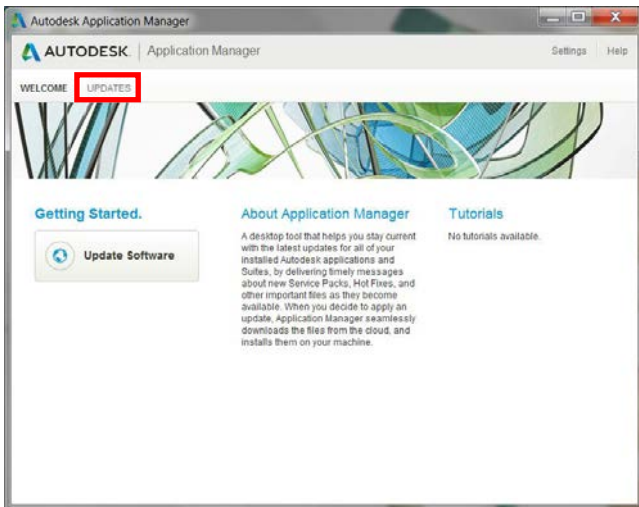
Continue on the next page to update Revit.



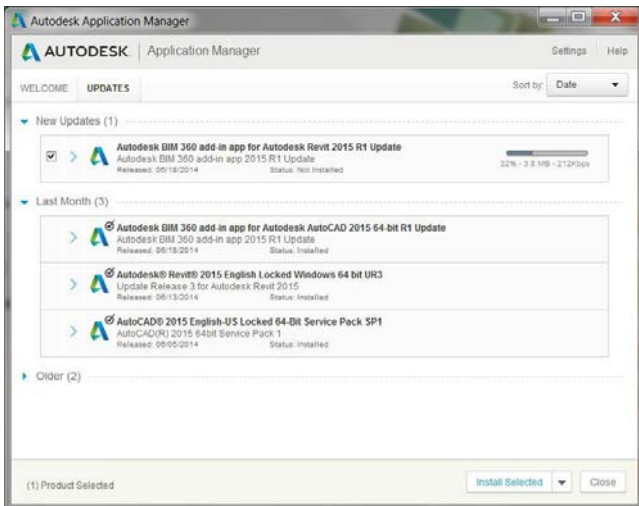
Updating Revit through the Autodesk Application Manager

Step 1. During installation of Revit you might get an update notification from Autodesk Application Manager. After you click on this notification go to **Updates** in the window that appears.

If you don't get the notification skip to step 5.

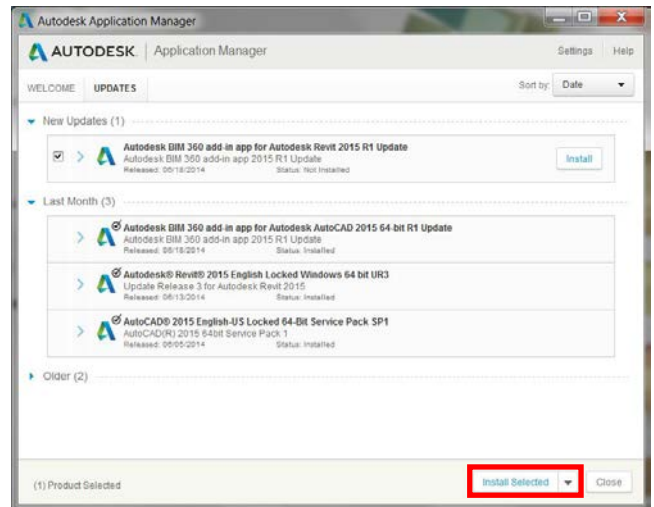


Step 3. The updates will be downloaded and installed automatically. If you minimize these windows the update process will continue in the background.



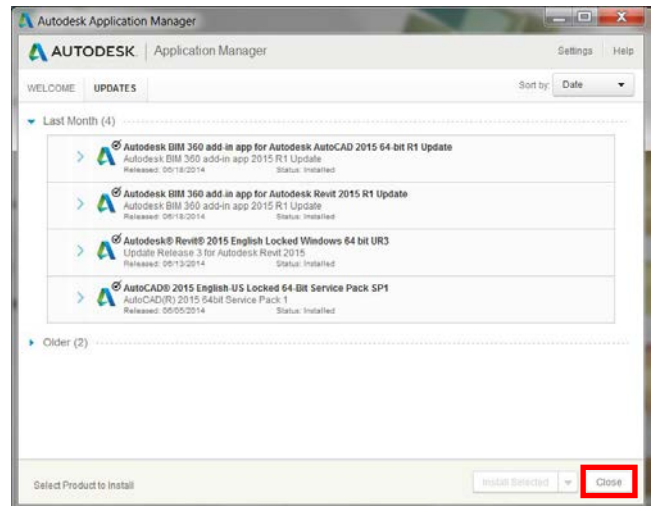
Step 2. Before you proceed to install the updates make sure that the regular installation is completed.

When ready, check all updates and click **Install Selected**.



Step 4. Verify that all components have been updated successfully. Click **Close**.

You can now run Revit 2016 by double-clicking the desktop icon or running the program via the start menu.



Step 5. When you start Revit 2016 for the first time it will automatically activate the product. A window will appear prompting you to read and agree to the privacy statement. Click **I Agree**.

